

## Tie-rod Compact Cylinder



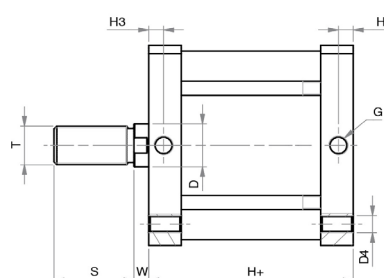
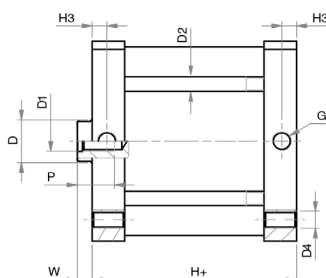
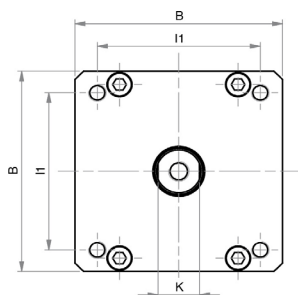
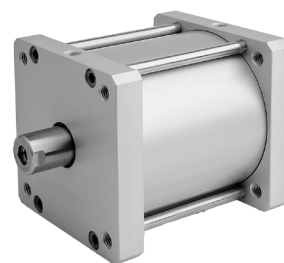
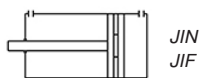
# Tie-rod Compact Cylinder

page 62

Technical information	
Diameter	Ø125 - Ø160 - Ø 200 - Ø250 mm
Stroke	10 - 25 -50 -75 - 100 - 125 - 160 - 200 - 250 - 300 mm Single acting Double acting
Medium	Air
Pressure range	Single acting: 2 ... 10 bar Double acting: 1 ... 10 bar
Temperature range	-20°C ... +80°C FPM version 0°C ... +150°C Below 0°C air has to be dried.
Materials	
Tube	Stainless steel AISI 303
Heads	Anodized aluminum
Piston	Aluminum
Piston rod	Anodized aluminum
Guide bushing	Steel + PTFE
Seals	PUR

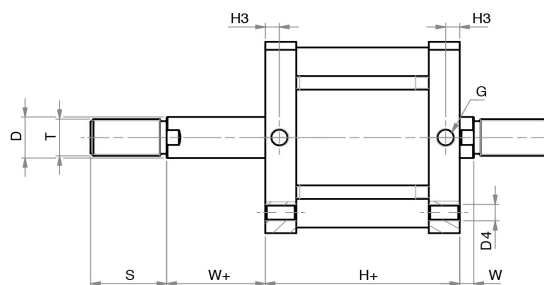
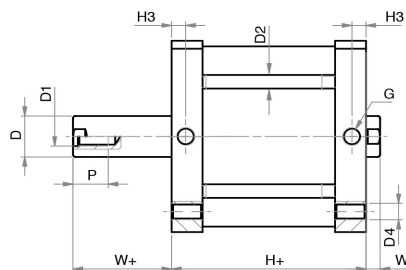
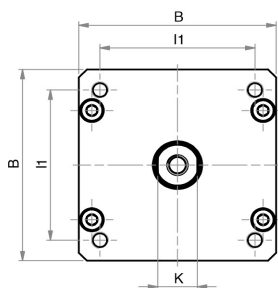
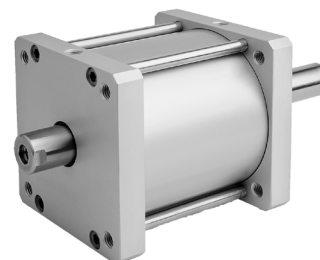
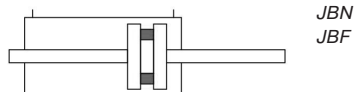
J	I	N	V	125	/	50
				<b>DIAMETER</b>		<b>STROKE</b>
				125		10
				160		25
				200		50
				250		75
						100
						125
						160
						200
						250
						300
				<b>SEALS</b>		
				<b>WITHOUT</b> Standard seals		
				<b>K</b> FPM Piston (for type JI, JB, JINT up to diam. 200 mm)		
				<b>V</b> FPM seals (for type JI, JB, JINT up to diam.Ø200 mm)		
				<b>VERSION</b>		
				<b>N</b> Piston rod with female thread		
				<b>F</b> Piston rod with male thread		
				<b>NT</b> Non-rotating piston rod (for type JI)		
				<b>FUNCTION</b>		
				<b>E</b> Single acting		
				<b>I</b> Double acting		
				<b>B</b> Double acting, through piston rod		

# JEN/JEF/JIN/JIF



Ø [mm]	B	D	D1	D2	D4	G	H+	H+ (FPM version)	H3	I1	K	P	S	T	W
Ø 125	140	30	M14	10	M12	G1/4	78	83	10	110	28	25	54	M27x2	10
Ø 160	180	40	M20	12	M16	G3/8	87	91	12	140	36	30	72	M36x2	12
Ø 200	220	40	M20	14	M16	G3/8	87	105	12	175	36	30	72	M36x2	12
Ø 250	270	40	M24	16	M20	G1/2	116	116	15	220	36	35	72	M36x2	12

# JBN/JBF

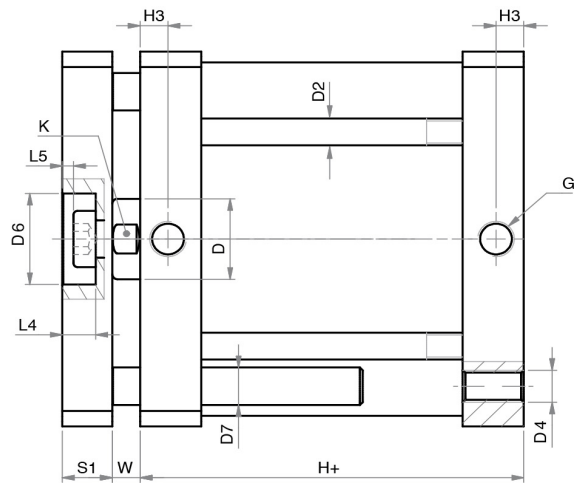
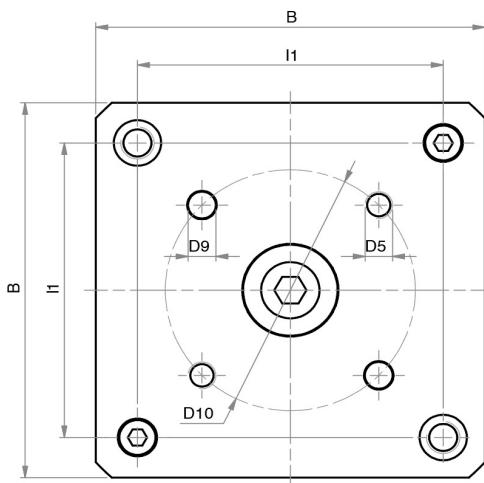
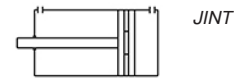
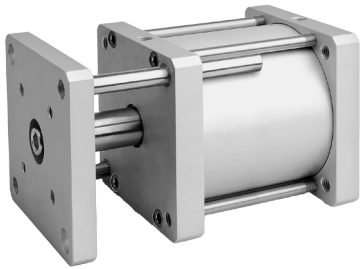


Ø [mm]	B	D	D1	D2	D4	G	H+	H+ (FPM version)	H3	I1	K	P	S	T	W	W+
Ø 125	140	30	M14	10	M12	G1/4	78	83	10	110	28	25	54	M27x2	10	10
Ø 160	180	40	M20	12	M16	G3/8	87	91	12	140	36	30	72	M36x2	12	12
Ø 200	220	40	M20	14	M16	G3/8	87	105	12	175	36	30	72	M36x2	12	12
Ø 250	270	40	M24	16	M20	G1/2	116	116	15	220	36	35	72	M36x2	12	12



# JINT

page 64



Ø [mm]	B	D	D1	D2	D4	D5	D6	D7	D9	D10
Ø 125	140	30	M14	10	M12	M10	34	14	10	90
Ø 160	180	40	M20	12	M16	M12	46	20	12	110
Ø 200	220	40	M20	14	M16	M12	46	20	12	110

Ø [mm]	G	H+	H+ (FPM version)	H3	I1	K	L4	L5	S1	W
Ø 125	G1/4	78	83	10	110	28	12	3	18	10
Ø 160	G3/8	87	91	12	140	36	16	3	23	12
Ø 200	G3/8	87	105	12	175	36	16	3	23	12

